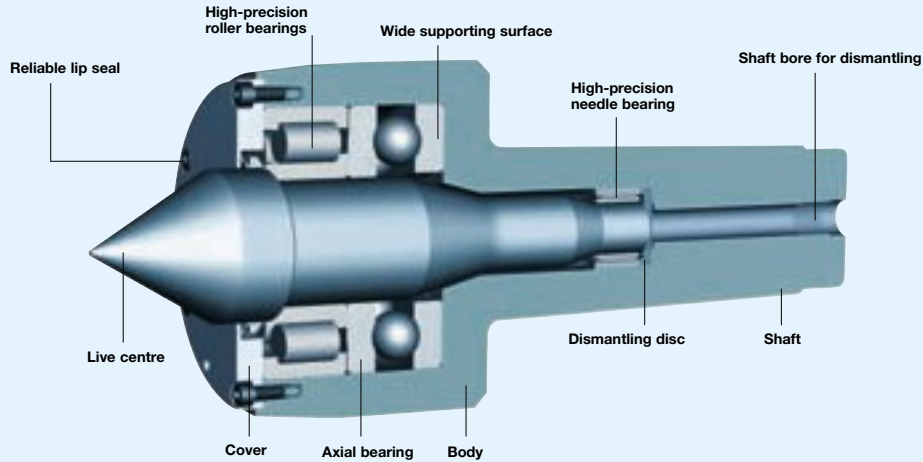
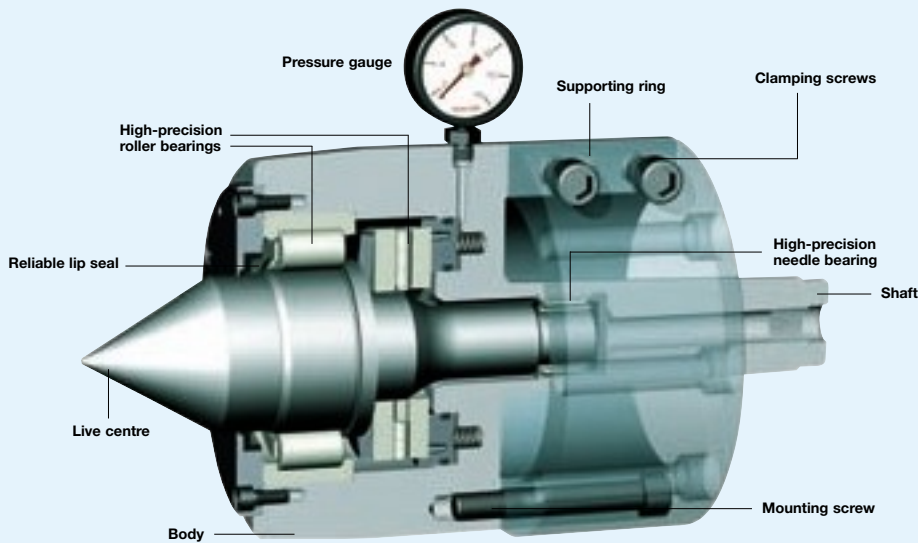


without draw-off nut, with draw-off nut, with tailstock support



with length compensation and pressure display, with tailstock support



Revolving tailstock centers for heavy duty machining

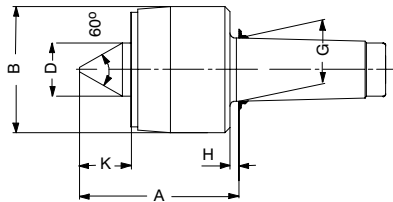
- Forged housing made of high quality material warranting a steady fiber orientation. Tensile strengt approx. 1000N/mm2
- Hardened head and shaft
- The center point is through-hardened and can be reground an unlimited number of times
- The revolving tailstock center features a low radial run-out value and is equipped with amply dimensioned roller bearings for absorption of the radial and axial forces
- Bearings at head and shaft resulting in a long guidance
- Maintenance free lifetime lubrication
- The bearing seats of the housing are manufactured with high precision in shape and dimensions
- The reliable rotary shaft seal protects the bearings from dirt and coolant

Available in three product lines:

- Taper mounting only
- Taper mounting only with draw-off nut
- Taper mounting with additional tailstock support

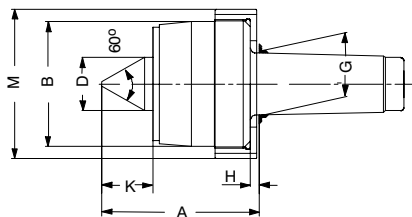
Perfectly suitable for turning and grinding machines

without draw-off nut



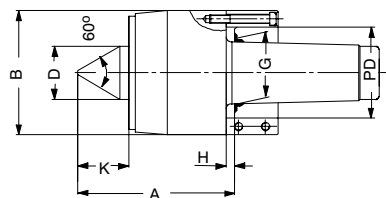
Size	MK 6	MK 7	Metr. 80 (1:20)	Metr. 100 (1:20)	Metr. 120 (1:20)	Nr. 80 (1:10)	Nr. 100 (1:10)	Nr. 120 (1:10)
Id.-No.	093439	466229	093440	058674	018801	093446	058675	466230
max. workpiece weight daN	5000	9000	8500	13000	22000	8500	13000	22000
B	140	150	140	200	245	140	200	245
D	60	70	60	85	110	60	85	110
G	63,348	83,061	80	100	120	80	100	120
H	13	15	13	14	15	13	14	15
A	196	215	196	257	274	196	257	274
K	68	77	68	86	102	68	86	102
max. concentr. error	0,01	0,01	0,01	0,01	0,01	0,01	0,01	0,01

with draw-off nut

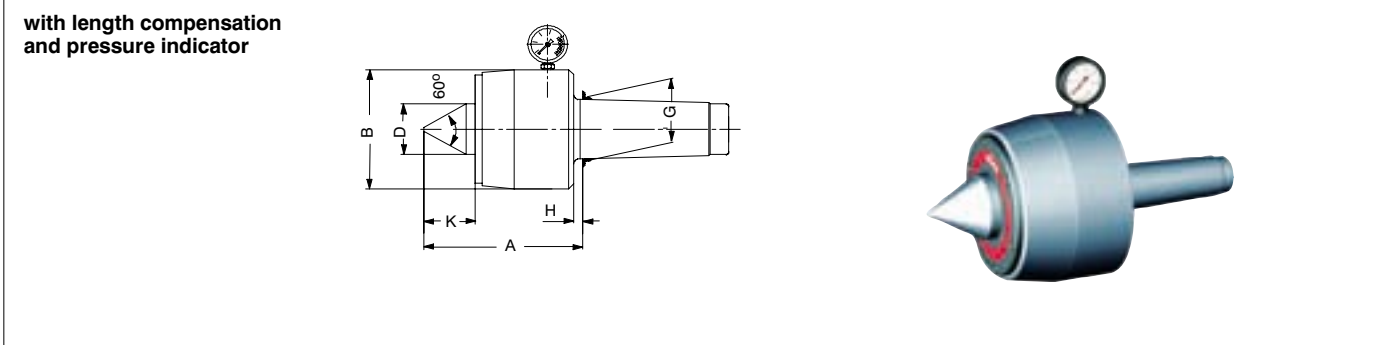


Size	MK 6	MK 7	Metr. 80 (1:20)	Metr. 100 (1:20)	Metr. 120 (1:20)	Nr. 80 (1:10)	Nr. 100 (1:10)	Nr. 120 (1:10)
Id.-No.	466231	466232	466233	466234	466235	466236	466237	466238
max. workpiece weight daN	5000	9000	8500	13000	22000	8500	13000	22000
B	140	150	140	200	245	140	200	245
D	60	70	60	85	110	60	85	110
G	63,348	83,061	80	100	120	80	100	120
H	13	15	13	14	15	13	14	15
A	196	215	196	257	274	196	257	274
K	68	77	68	86	102	68	86	102
max. concentr. error	0,01	0,01	0,01	0,01	0,01	0,01	0,01	0,01
M	158	168	158	224	270	158	224	270

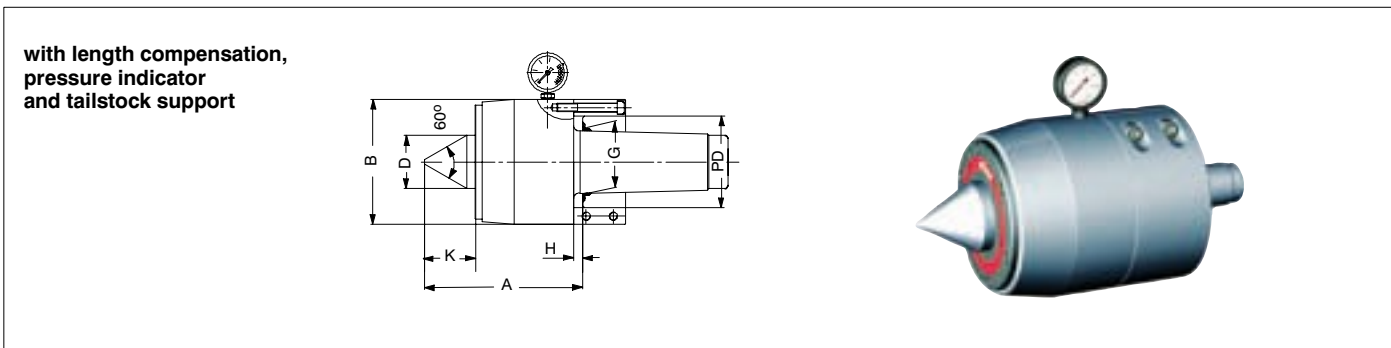
with tailstock support



Size	MK 6	MK 7	Metr. 80 (1:20)	Metr. 100 (1:20)	Nr. 80 (1:10)	Nr. 100 (1:10)		
Id.-No.	466239	466240	466241	466242	466243	466244		
max. workpiece weight daN	10000	15000	15000	20000	15000	20000		
B	230	240	240	260	240	260		
D	85	95	95	108	95	108		
G	63,348	83,061	80	100	80	100		
H	13	15	13	14	13	14		
A	254	270	269	298	269	298		
K	86	92	92	102	92	102		
max. concentr. error	0,01	0,01	0,01	0,01	0,01	0,01		
PD max.	170	180	180	200	180	200		



Size	MK 6	MK 7	Metr. 80 (1:20)	Metr. 80 (1:20)	Metr. 100 (1:20)	Nr. 80 (1:10)	Nr. 80 (1:10)	Nr. 100 (1:10)
Id.-Nr.	060915	466245	466246	466247	466248	466249	466250	466251
max. workpiece weight daN	3200	8000	6000	8000	12000	6000	8000	12000
B	120	195	145	195	230	145	195	230
D	52	85	60	85	100	60	85	100
G	63,348	83,061	80	80	100	80	80	100
H	13	15	13	13	14	13	13	14
A	202	278	209	276	310	209	276	310
K	59	88	62	88	96	62	88	96
max. concentr. error	0,015	0,015	0,015	0,015	0,015	0,015	0,015	0,015
max. travel of spring	2,7	4,5	3,4	4,5	4,5	3,4	4,5	4,5
max. axial load daN	2000	10000	5000	10000	14000	5000	10000	14000



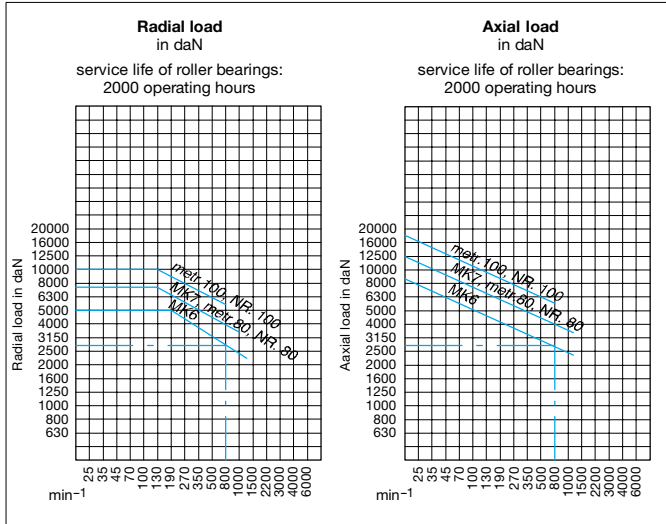
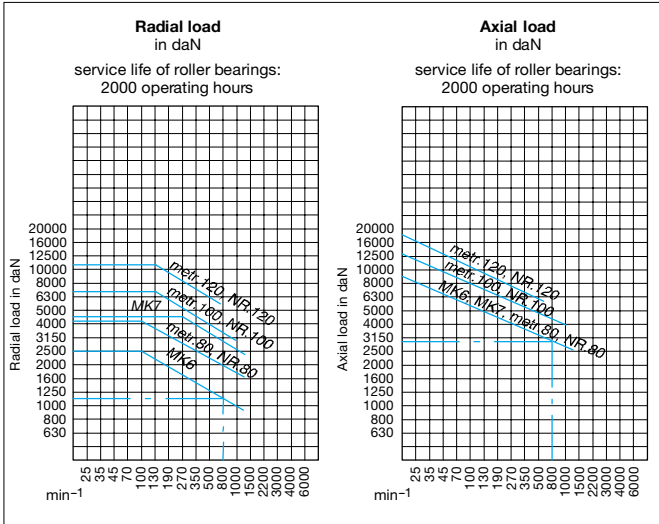
Size	MK 6	MK 6	Metr. 80 (1:20)	Metr. 80 (1:20)	Metr. 100 (1:20)	Nr. 80 (1:10)	Nr. 80 (1:10)	Nr. 100 (1:10)
Id.-No.	466252	466253	466254	466255	466256	466257	466258	466259
max. workpiece weight daN	6000	10000	10000	12000	15000	10000	12000	15000
B	210	240	240	290	290	240	290	290
D	60	85	85	100	100	85	100	100
G	63,348	63,348	80	80	100	80	80	100
H	13	13	13	13	14	13	13	14
A	209	278	278	310	310	278	310	310
K	62	88	88	96	96	88	96	96
max. concentr. error	0,015	0,015	0,015	0,015	0,015	0,015	0,015	0,015
max. travel of spring	3,4	4,5	4,5	4,5	4,5	4,5	4,5	4,5
max. axial load daN	5000	10000	10000	14000	14000	10000	14000	14000
PD max.	150	180	180	220	220	180	220	220

Load Diagrams

Revolving Tailstock Centers

Example: size MK 6 without/with draw-off nut:
admissible load of revolving tailstock center at 800 min⁻¹,
1100 daN radially, 3000 daN axially

Example: size MK 6 with tailstock support:
admissible load of revolving tailstock center at 800 min⁻¹,
2700 daN radially, 2700 daN axially



Example: size MK6 with length compensation and pressure indicator:
admissible load of revolving tailstock center at 270 min⁻¹,
1200 daN radially, 2000 daN axially

Example: size MK6 with length compensation, pressure indicator and tailstock support:
admissible load of revolving tailstock center at 270 min⁻¹,
2550 daN radially, 4000 daN axially

